

CONSTRUCTION NOTES:

- ① 6-INCH SENSUS OMNI C2 AMI METER WITH STRAINER AND M520M TRANSCEIVER UNIT. SENSUS PART #: C61SXXXF1AA0X
8-INCH SENSUS OMNI C2 AMI METER WITH STRAINER AND M520M TRANSCEIVER UNIT. SENSUS PART #: C81SXXXF1AA0X
- ② 6-INCH OR 8-INCH FLANGED COUPLING ADAPTER, MIN. 150 PSI RATING (SMITH-BLAIR OAE)
- ③ 6-INCH OR 8-INCH FLANGED X PLAIN END DUCTILE IRON SPOOL (CL350)
- ④ 6-INCH OR 8-INCH FLANGED X MJ RESILIENT WEDGE GATE VALVE WITH VALVE BOX ASSEMBLY PER ALW STD W-10, MIN. 150 PSI RATING (MUELLER OAE)
- ⑤ 6-INCH X 4-INCH OR 8-INCH X 6-INCH FLANGED DUCTILE IRON TEE (CL350)
- ⑥ 4-INCH OR 6-INCH FLANGED X MJ RESILIENT WEDGE GATE VALVE WITH VALVE BOX ASSEMBLY PER ALW STD W-10, MIN. 150 PSI RATING (MUELLER OAE)
- ⑦ 4-INCH OR 6-INCH DUCTILE IRON PIPE (CL350)
- ⑧ 4-INCH OR 6-INCH DUCTILE IRON 90° BEND (CL350)
- ⑨ THRUST BLOCK PER ALW STANDARD W-7
- ⑩ 2-INCH DOUBLE STRAP BRASS SADDLE (F.I.P.T. OUTLET), BALL VALVE (M.I.P.T. X M.I.P.T.), AND CAP (MUELLER OAE)
- ⑪ PIPE SUPPORT PER ALW STD W-8
- ⑫ 6-FT X 8-FT (I.D.) PRECAST CONCRETE VAULT, OPEN BOTTOM, SPRING ASSISTED TRAFFIC LID (J&R CONCRETE PRODUCTS OAE)
- ⑬ GALVANIZED LADDER, WALL MOUNTED (INWESCO OAE)

WATER STANDARD



DRAWN: A. TOHMEH
DATE: 02-27-2020
SCALE: NTS

6" & 8" METERS WITH BY-PASS

APPROVED: *[Signature]*
SENIOR WATER SYSTEM ENGINEER

76544 RCE NO. 02/27/2020 DATE

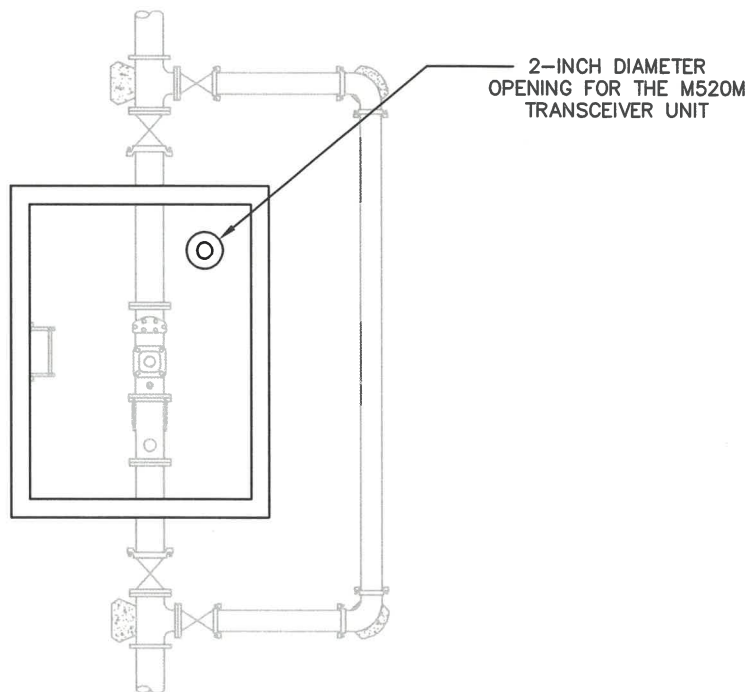
DWG. NO.
W - 4

SHEET
1 OF 2

- ALL WORK PERFORMED SHALL BE INSPECTED BY THE ALW WATER DIVISION INSPECTOR.
- ANY CHANGES TO THIS STANDARD MUST BE APPROVED BY THE ALW WATER DIVISION ENGINEER.
- PRIOR TO ORDERING MATERIALS, SUBMITTALS SHALL BE PROVIDED TO ALW FOR ALL MATERIALS FOR REVIEW AND APPROVAL BY ALW.
- ALL PIPE SHALL BE DUCTILE IRON CLASS 350 PIPE.
- ALL HARDWARE AND BOLTS SHALL BE TYPE 316 STAINLESS STEEL.
- PLACE AN APPROVED FLEXIBLE PACKING AROUND PIPE PENETRATIONS.
- THE WATER METER SHALL HAVE A MINIMUM OF 12-INCH CLEARANCE ON ALL SIDES.

UNLESS OTHERWISE SPECIFIED ON PLANS OR CALLED FOR IN THE SPECIFICATIONS:

1. ALL VAULTS SHALL BE OPEN BOTTOM AND PLACED ON 18 INCHES OF COMPACTED 3/4-INCH ROCK.
2. THE HATCH SHALL BE A U.S.F. FABRICATION, INC. (OAE) SPRING ASSISTED, DOUBLE-LEAF ALUMINUM HATCH AND SHALL BE DESIGNED FOR H-20 PARKING LOT / OCCASIONAL TRAFFIC (MAXIMUM 15 M.P.H., LOAD LEVEL 5 / LOAD LEVEL 4). A 2-INCH DIAMETER OPENING SHALL BE MADE AT THE CORNER OF THE HATCH ON THE BYPASS SIDE OF THE VAULT FOR THE M520M TRANSCEIVER UNIT.
3. EACH SIZE METER SHALL HAVE THE FOLLOWING BY-PASS PIPING SIZE:
 6" METER = 4" BY-PASS
 8" METER = 6" BY-PASS



WATER STANDARD



DRAWN: A. TOHMEH
DATE: 02-27-2020
SCALE: NTS

6" & 8" METERS WITH BY-PASS

APPROVED: *[Signature]* **76544** **02/27/2020**
 SENIOR WATER SYSTEM ENGINEER RCE NO. DATE

DWG. NO.
W - 4
SHEET
2 OF 2